

TECHNOLOGY

US

IMPACT



Physics-based, operational forecasting of production induced seismicity within the Groningen gas field

Stephen Bourne¹, Steve Oates¹, Jan van Elk²

¹ Shell Global Solutions International B.V., The Netherlands

² Nederlandse Aardolie Maatschappij B.V., The Netherlands



Definitions & Cautionary Note



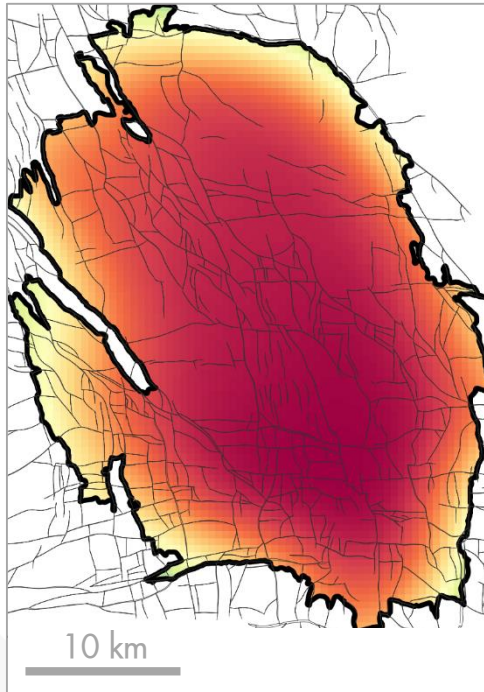
The companies in which Royal Dutch Shell plc directly and indirectly owns investments are separate legal entities. In this presentation “Shell”, “Shell group” and “Royal Dutch Shell” are sometimes used for convenience where references are made to Royal Dutch Shell plc and its subsidiaries in general. Likewise, the words “we”, “us” and “our” are also used to refer to subsidiaries in general or to those who work for them. These expressions are also used where no useful purpose is served by identifying the particular company or companies. “Subsidiaries”, “Shell subsidiaries” and “Shell companies” as used in this presentation refer to companies over which Royal Dutch Shell plc either directly or indirectly has control. Entities and unincorporated arrangements over which Shell has joint control are generally referred to as “joint ventures” and “joint operations” respectively. Entities over which Shell has significant influence but neither control nor joint control are referred to as “associates”. The term “Shell interest” is used for convenience to indicate the direct and/or indirect ownership interest held by Shell in a venture, partnership or company, after exclusion of all third-party interest.

This presentation contains forward-looking statements concerning the financial condition, results of operations and businesses of Royal Dutch Shell. All statements other than statements of historical fact are, or may be deemed to be, forward-looking statements. Forward-looking statements are statements of future expectations that are based on management’s current expectations and assumptions and involve known and unknown risks and uncertainties that could cause actual results, performance or events to differ materially from those expressed or implied in these statements. Forward-looking statements include, among other things, statements concerning the potential exposure of Royal Dutch Shell to market risks and statements expressing management’s expectations, beliefs, estimates, forecasts, projections and assumptions. These forward-looking statements are identified by their use of terms and phrases such as “anticipate”, “believe”, “could”, “estimate”, “expect”, “goals”, “intend”, “may”, “objectives”, “outlook”, “plan”, “probably”, “project”, “risks”, “schedule”, “seek”, “should”, “target”, “will” and similar terms and phrases. There are a number of factors that could affect the future operations of Royal Dutch Shell and could cause those results to differ materially from those expressed in the forward-looking statements included in this presentation, including (without limitation): (a) price fluctuations in crude oil and natural gas; (b) changes in demand for Shell’s products; (c) currency fluctuations; (d) drilling and production results; (e) reserves estimates; (f) loss of market share and industry competition; (g) environmental and physical risks; (h) risks associated with the identification of suitable potential acquisition properties and targets, and successful negotiation and completion of such transactions; (i) the risk of doing business in developing countries and countries subject to international sanctions; (j) legislative, fiscal and regulatory developments including regulatory measures addressing climate change; (k) economic and financial market conditions in various countries and regions; (l) political risks, including the risks of expropriation and renegotiation of the terms of contracts with governmental entities, delays or advancements in the approval of projects and delays in the reimbursement for shared costs; and (m) changes in trading conditions. No assurance is provided that future dividend payments will match or exceed previous dividend payments. All forward-looking statements contained in this presentation are expressly qualified in their entirety by the cautionary statements contained or referred to in this section. Readers should not place undue reliance on forward-looking statements. Additional risk factors that may affect future results are contained in Royal Dutch Shell’s Form 20-F for the year ended December 31, 2018 (available at www.shell.com/investor and www.sec.gov). These risk factors also expressly qualify all forward-looking statements contained in this presentation and should be considered by the reader. Each forward-looking statement speaks only as of the date of this presentation, [7/03/2019]. Neither Royal Dutch Shell plc nor any of its subsidiaries undertake any obligation to publicly update or revise any forward-looking statement as a result of new information, future events or other information. In light of these risks, results could differ materially from those stated, implied or inferred from the forward-looking statements contained in this presentation.

We may have used certain terms, such as resources, in this presentation that United States Securities and Exchange Commission (SEC) strictly prohibits us from including in our filings with the SEC. U.S. investors are urged to consider closely the disclosure in our Form 20-F, File No 1-32575, available on the SEC website www.sec.gov. You can also obtain this form from the SEC by calling 1-800-SEC-0330.

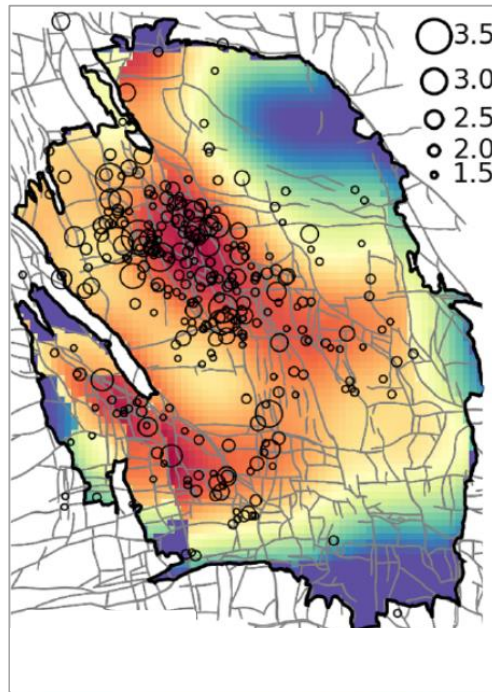
Groningen production induces depletion, seismicity, hazard, and risk

Depletion



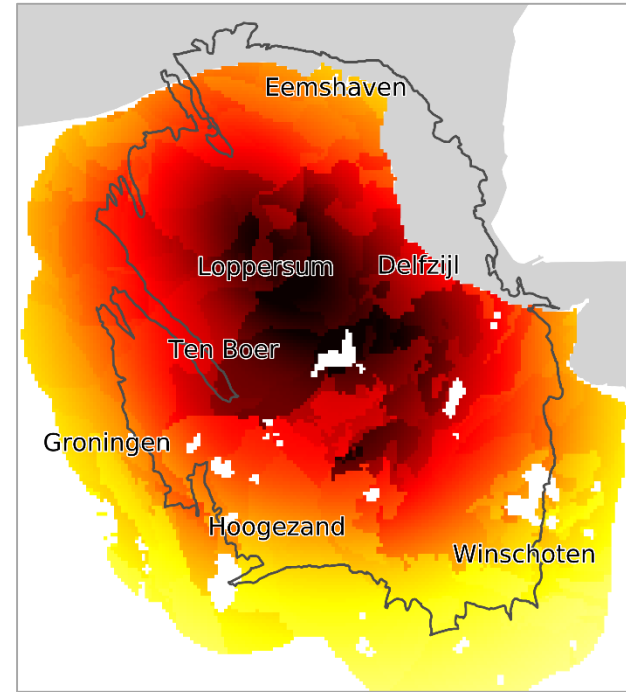
Uniform reservoir depletion reflects hydraulic connectivity

Seismicity



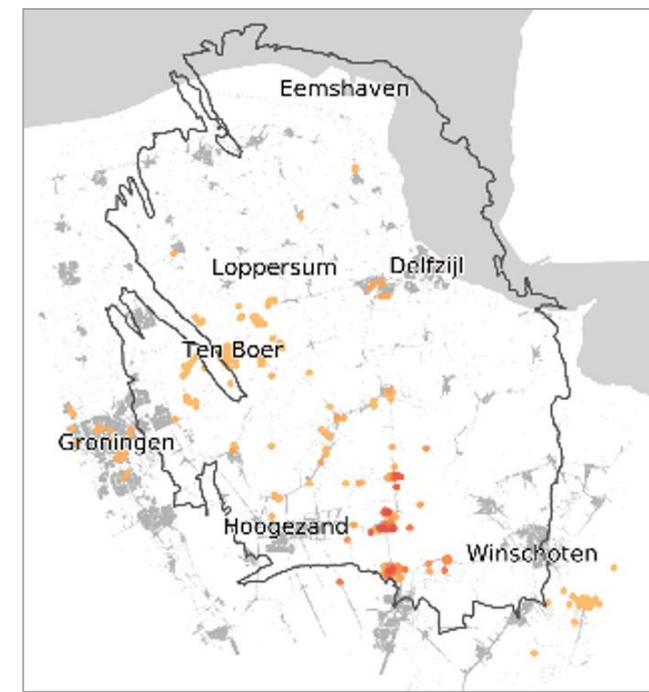
Heterogeneous reservoir seismicity reflects poroelastic Coulomb stress

Hazard



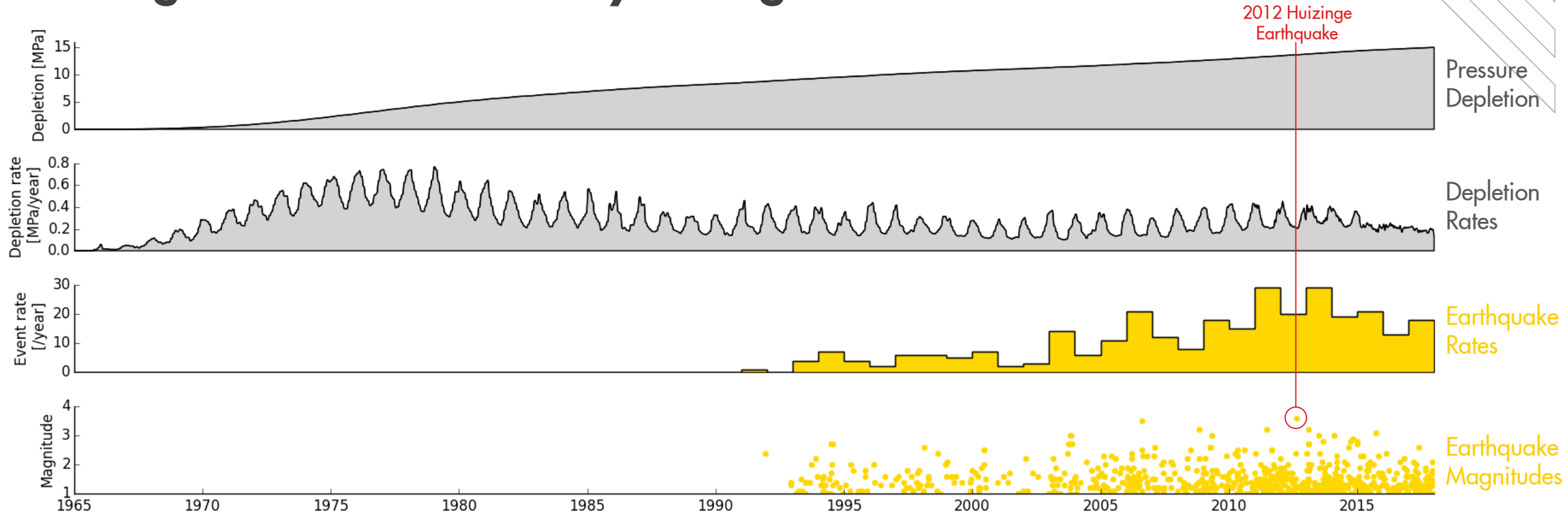
Heterogeneous ground motion hazard reflects seismicity and near-surface geology

Risk



Distributed risk clustering reflects building exposure to hazard

Groningen induced seismicity emerges over decades



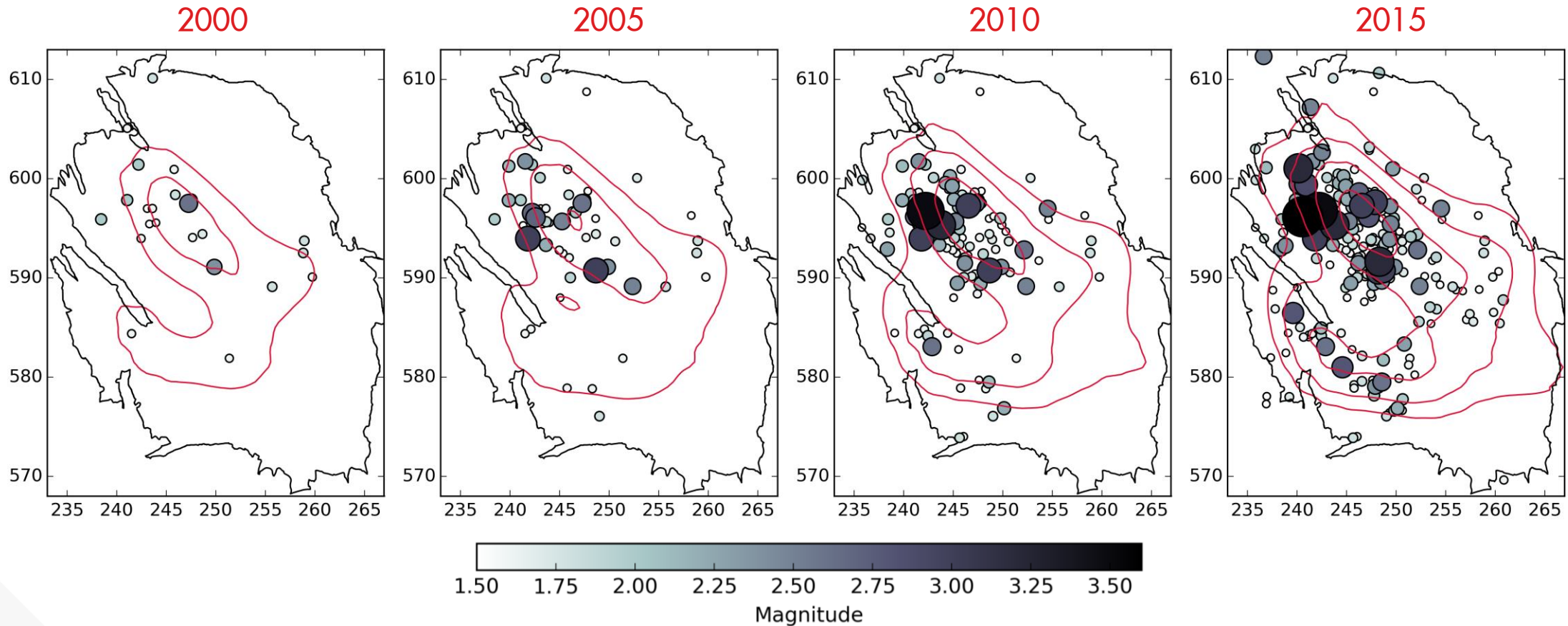
Induced seismicity increases slowly

- Earthquake rates *slowly* increased with time
- Earthquake magnitudes *slowly* increased with time

Expertise in producing gas not earthquakes

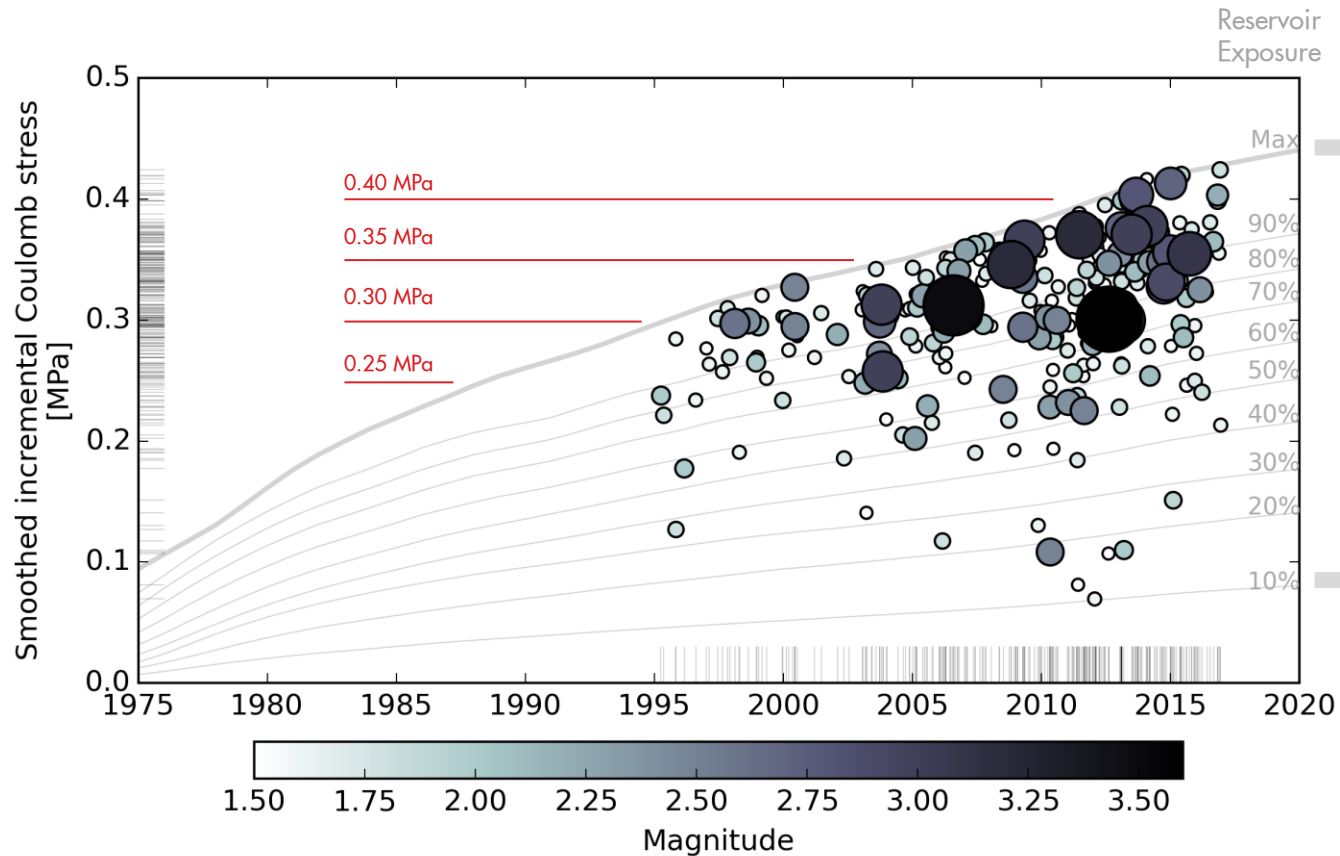
- Forecasting gas production is routine
- Forecasting earthquakes is *not* routine

Induced seismicity follows induced stress



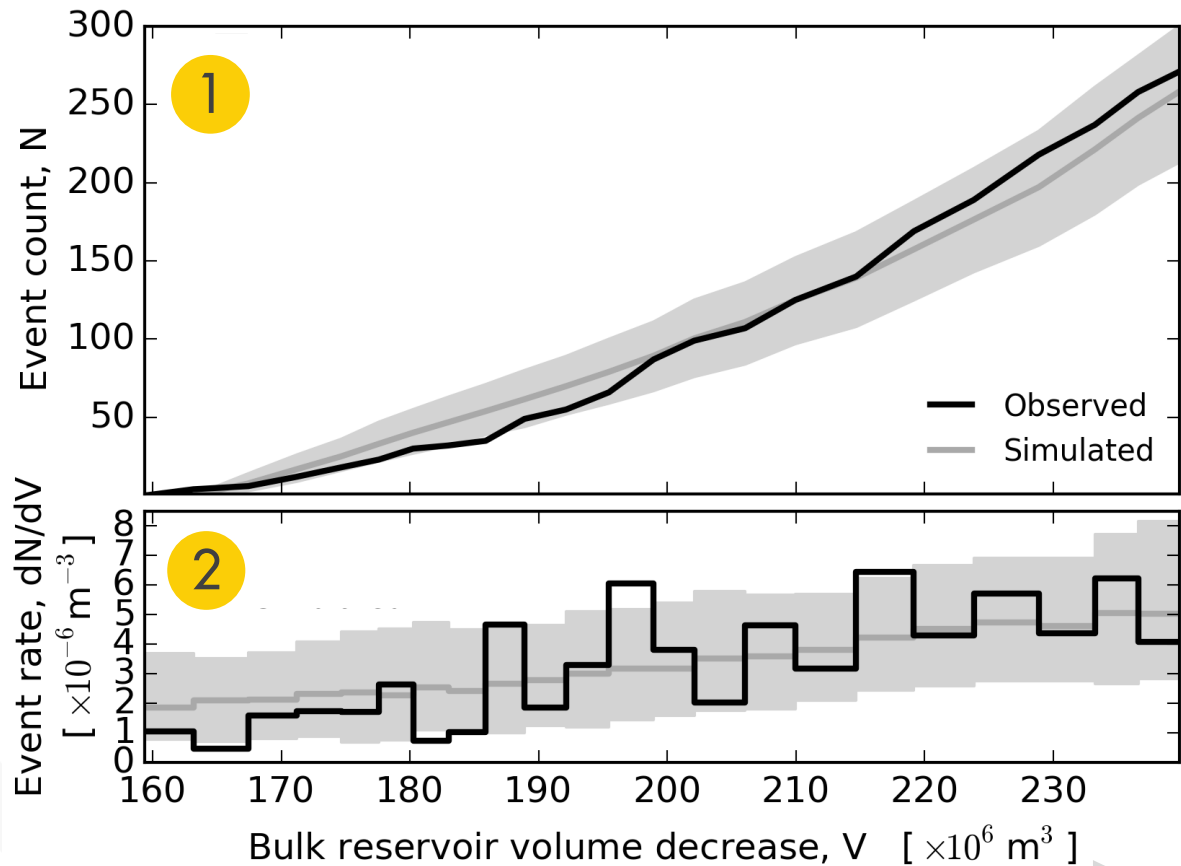
- Smoothed incremental Coulomb stress contours: 0.25, 0.30, 0.35, 0.40 MPa
- Earthquake rates and magnitudes appear to increase with incremental Coulomb stress

Induced seismicity *mostly* follows induced stress



- Significant variability of induced stress at the time and location of induced earthquakes
- Earthquakes more likely at higher stresses
- Larger magnitudes more likely at higher stresses

An exponential rise of induced seismicity with induced stress



Observations

- 1 Numbers increase exponential-like with cumulative production
- 2 Numbers per unit gas production increases steadily

Interpretation

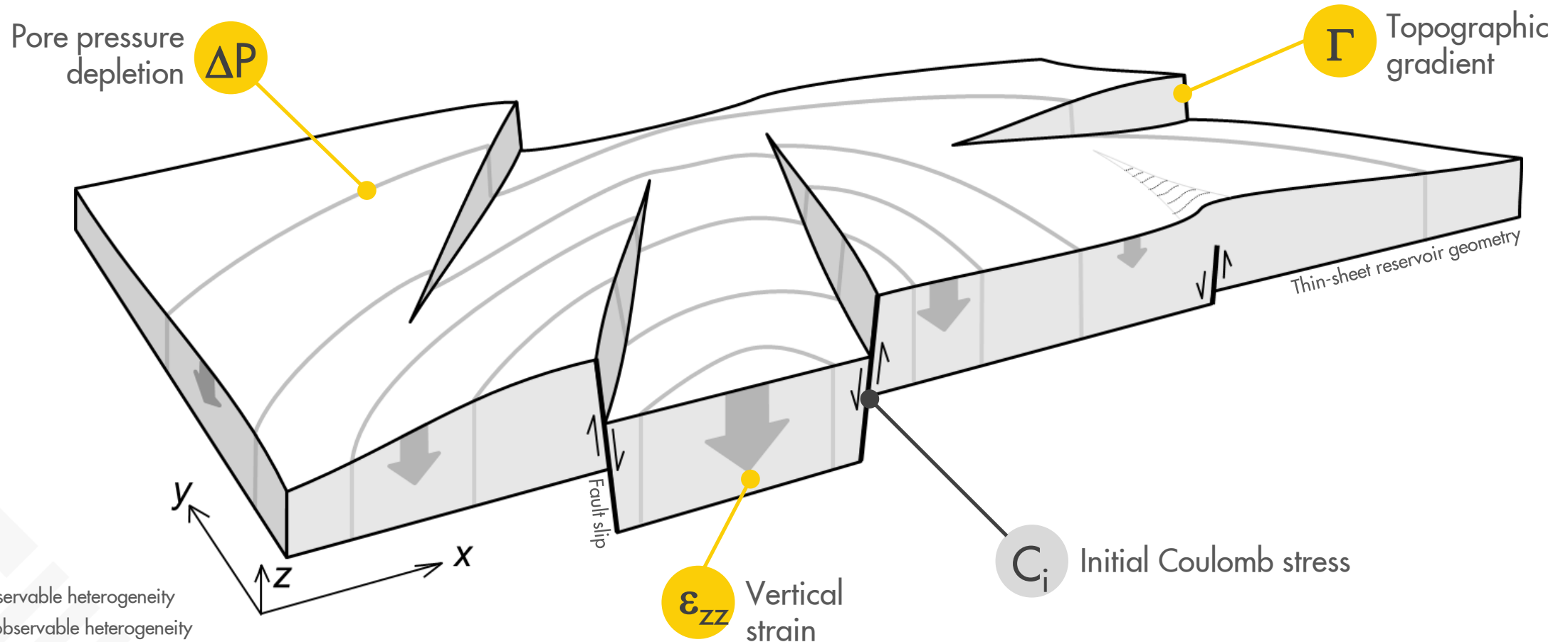
- Fault reactivations increase exponentially with increasing stress
- Fault strength is a **highly-variable & disordered** system
- Statistical trends emerge from large disordered systems

Increasing pressure depletion

Increasing Coulomb stress

A simple, fast, probabilistic, reservoir stress model

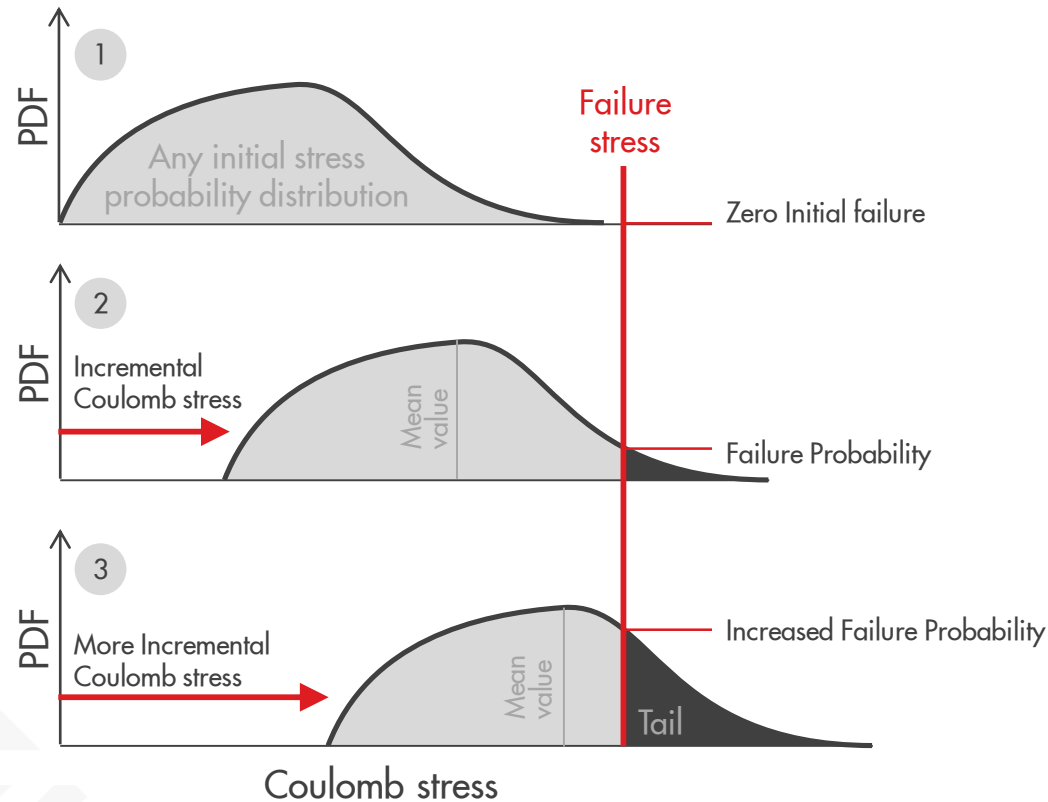
Poroelastic thin-sheet with Coulomb faults



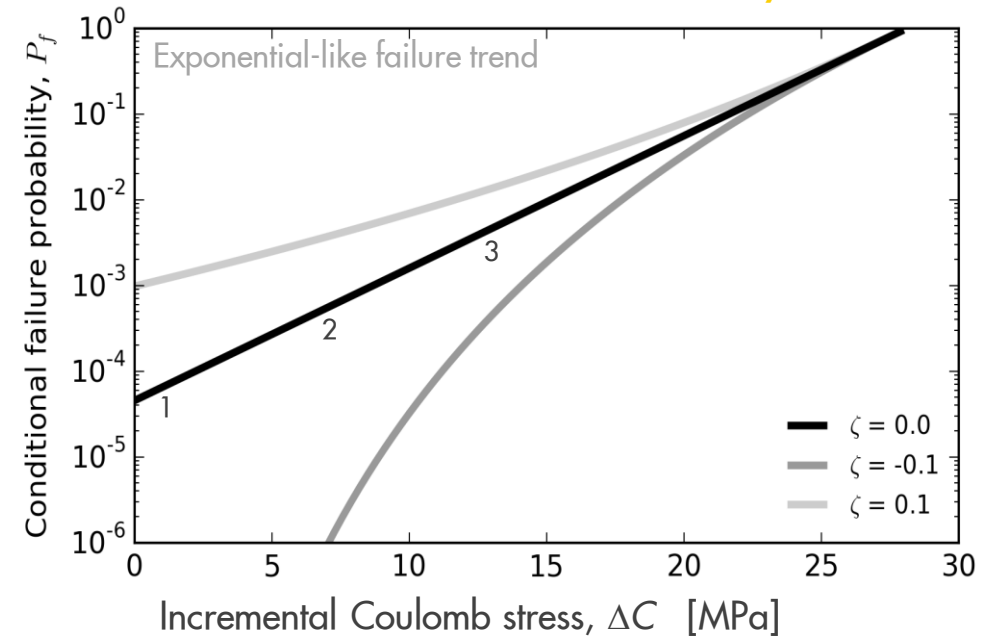
Fault Reactivation is an Extreme Threshold Failure process

Not a Mean Value Failure process

Failure Probability

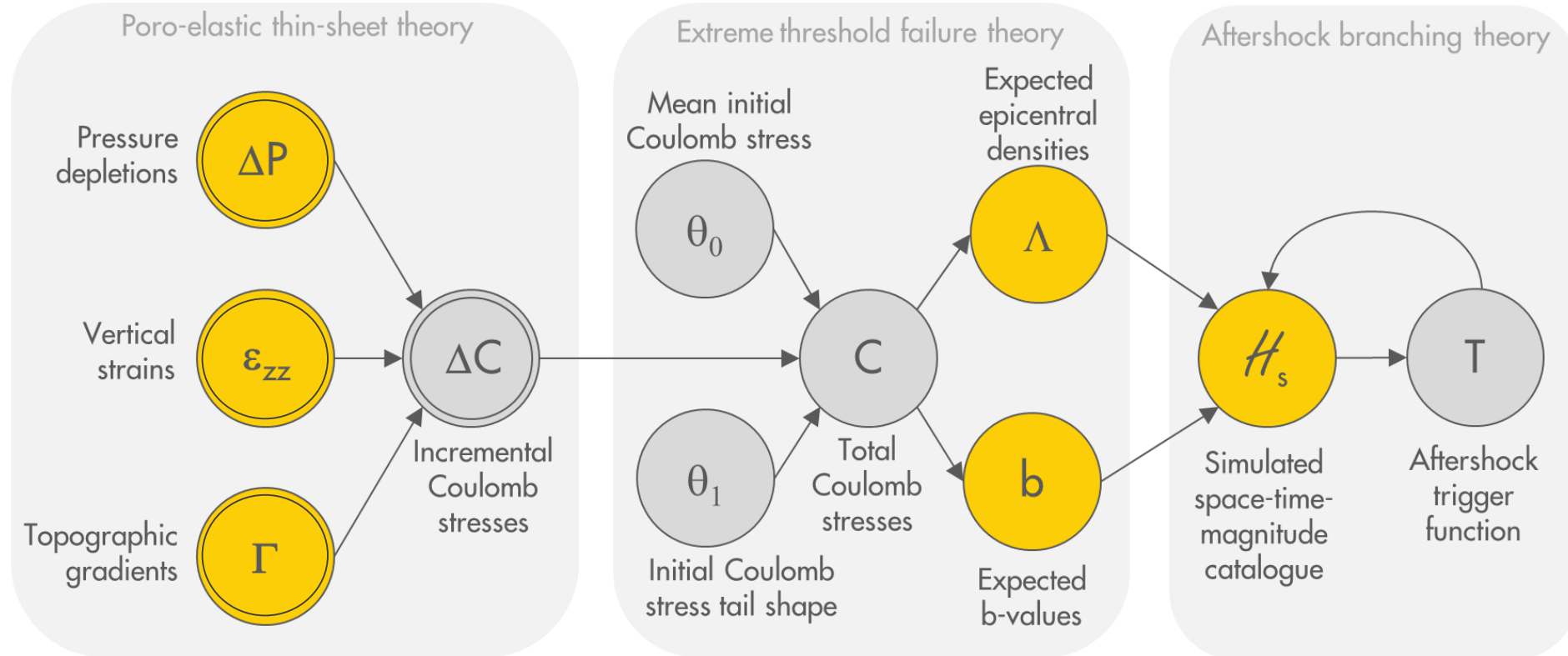


Extreme Threshold Theory



- Tail of the initial stress distribution fails first
- All probability tails follow Extreme Threshold Theory
- Mean value failure criteria are systematically optimistic

Seismological model as a probability network of physical processes

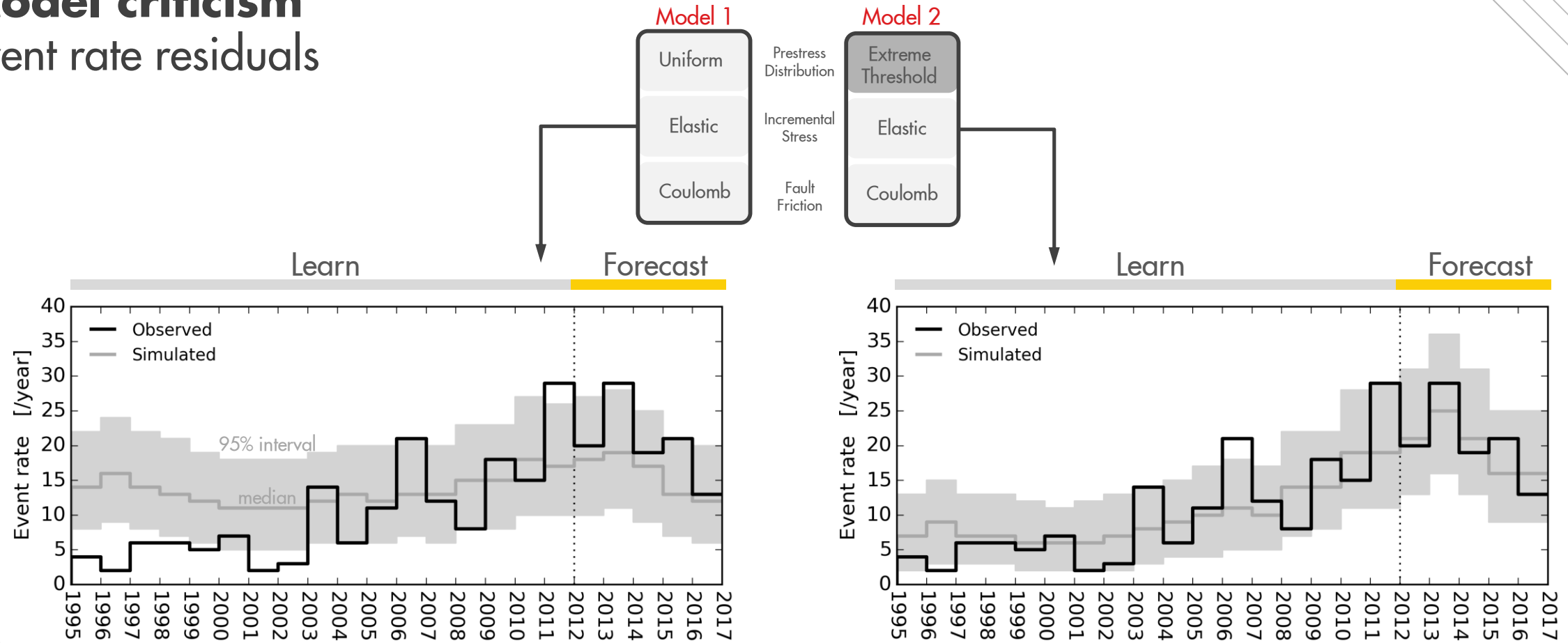


● Observable ○ Deterministic
○ Unobservable ○ Probabilistic

- Measure what is observable, & randomize what is hidden
- Hidden values inferred by treating network as a Bayesian model
- Yields ensemble of history-matched models

Model criticism

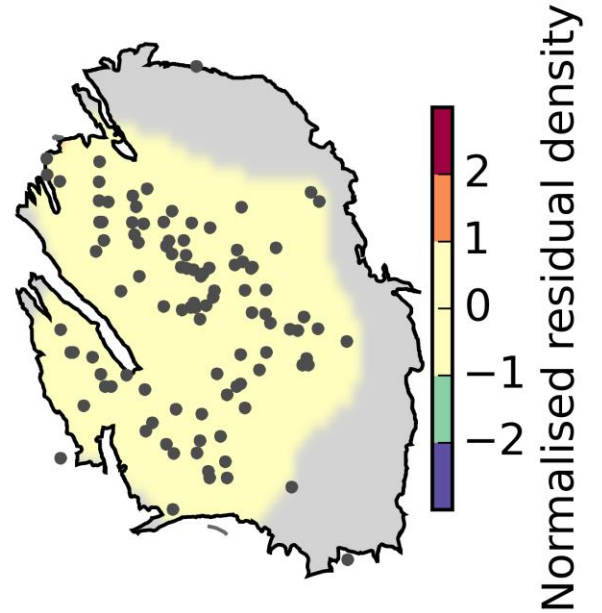
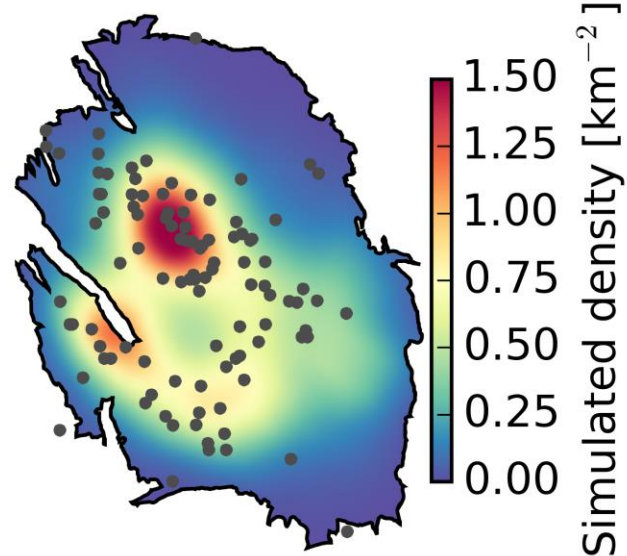
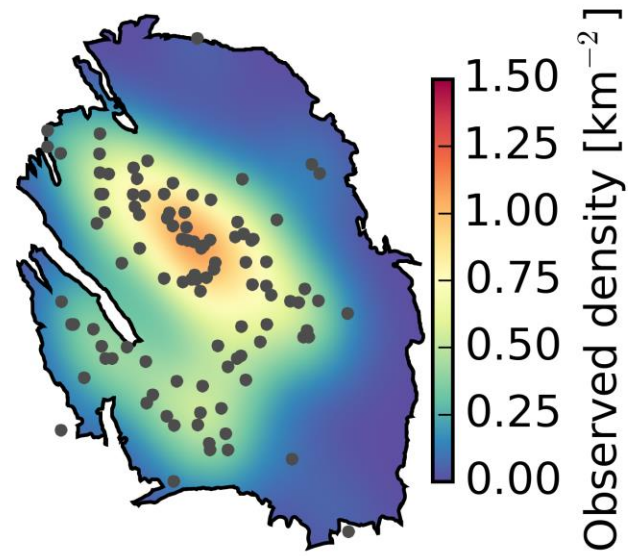
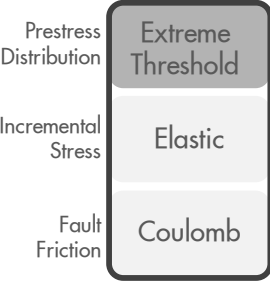
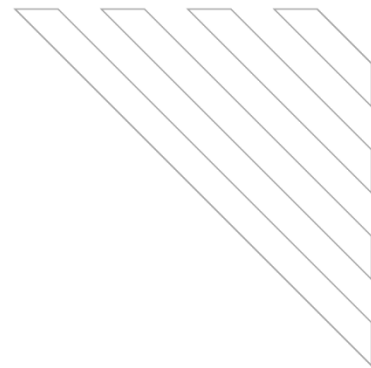
Event rate residuals



- **Model 1:** Uniform Prestress Distribution insufficient to describe increasing event rates from 1995 to 2012
- **Model 2:** Exponential Extreme Threshold Failure trend improves performance over the learning and forecast periods

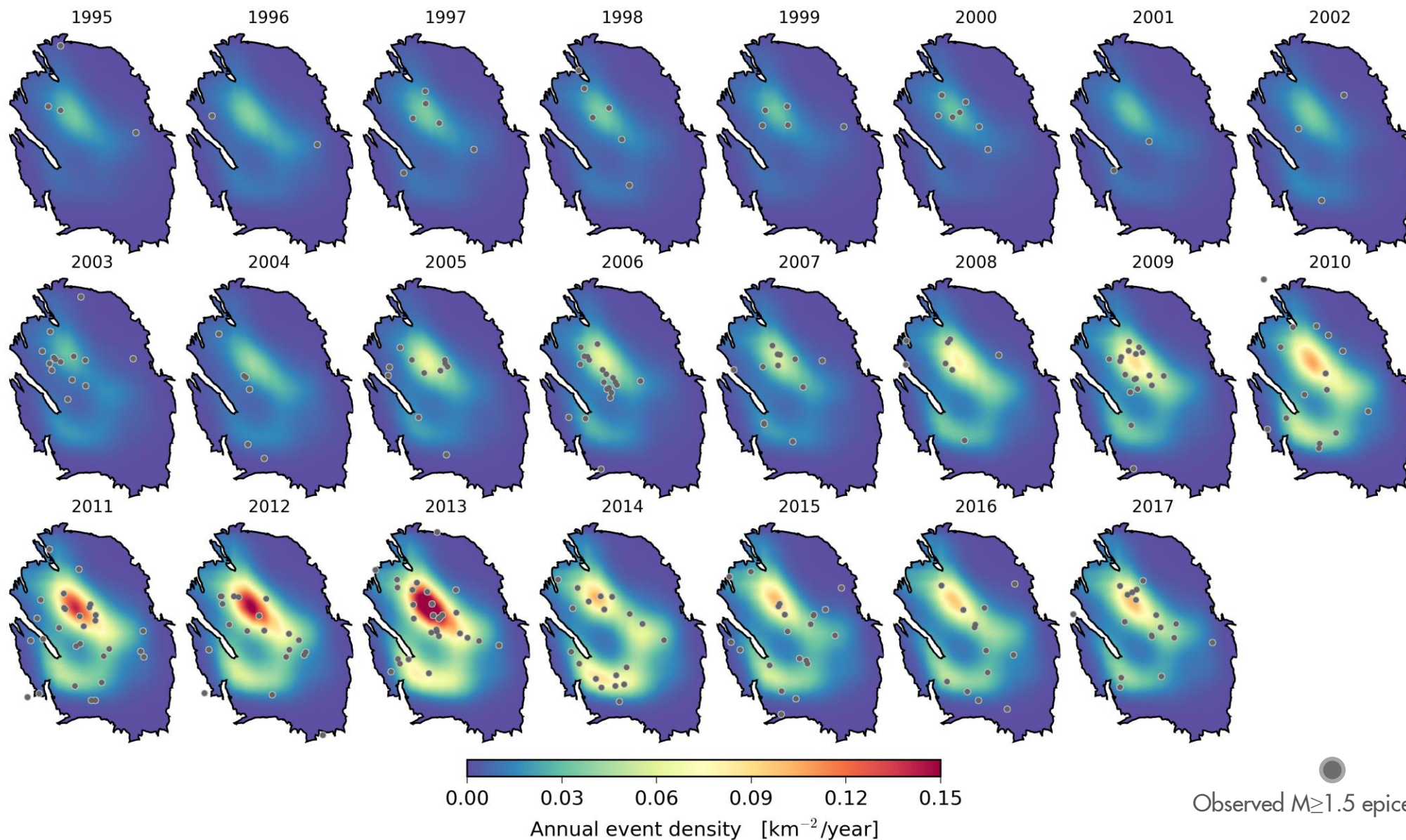
Model criticism

Epicentral density residuals



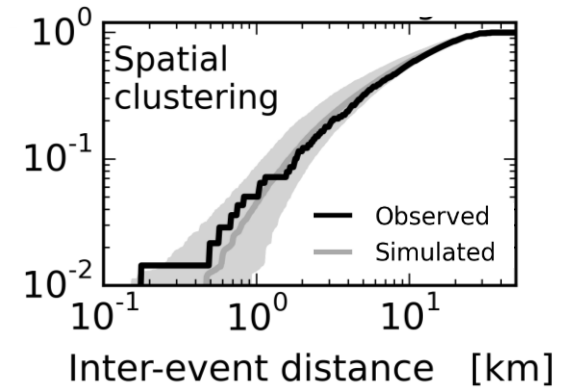
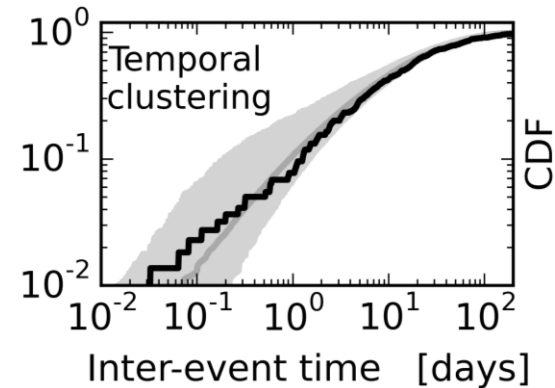
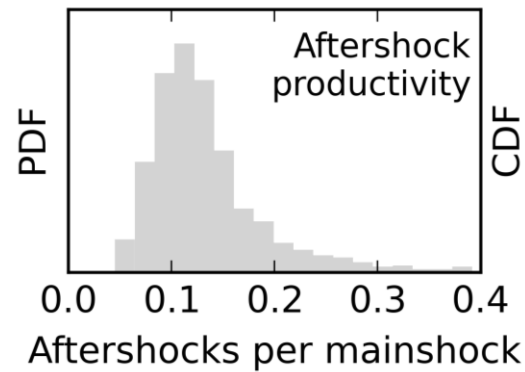
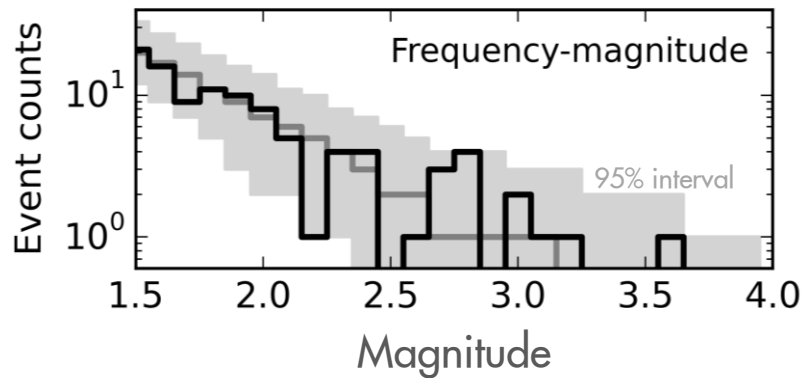
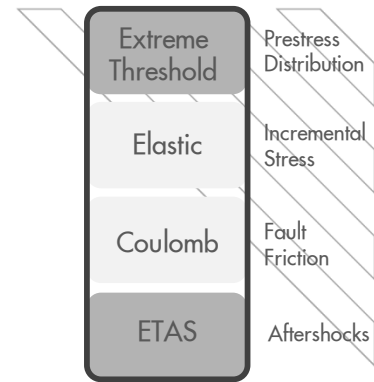
- Learning period: 1995 to 2012
- Forecast period: 2012 to 2017
- Extreme Threshold Failure model forecasts observed spatial density within stochastic variability

Expected epicentral density maps given history matched models



Model criticism

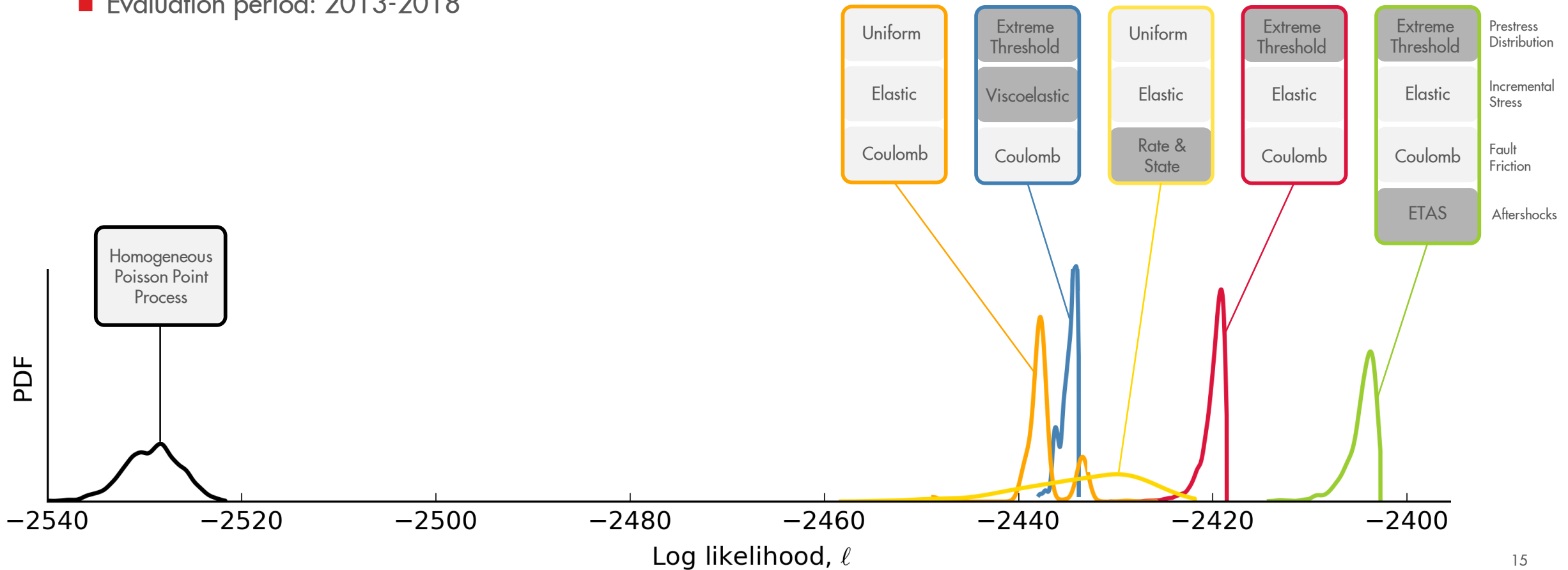
Magnitude distribution and aftershock clustering residuals



- Learning period: 1995 to 2012
- Forecast period: 2012 to 2017
- Epidemic Type Aftershock model forecasts magnitudes and aftershocks consistent with observed trends and variabilities
- 10-20% of observed earthquakes are aftershocks triggered by small stress transients induced by prior earthquakes

Blind forecast performance analysis

- Performance metric: Likelihood of observed events given the model
- Learning period: 1995-2013
- Evaluation period: 2013-2018





Summary

- Established a minimum physics-based theory for fault reactivation & induced seismicity with Groningen
- Pore-elastic thin-sheet theory
 - Computes smoothed incremental Coulomb stress according to resolvable geometric and elastic heterogeneities
- Extreme thresholds failure theory
 - Computes induced seismicity rates according to incremental Coulomb stress and the extremes of initial Coulomb stress
 - Computes the frequency-magnitude distribution and its dependence on incremental Coulomb stress
- Bayesian inference for hidden variables
 - Ensemble of realizations for each seismological model
 - Family of alternative seismological models represent different types of reservoir heterogeneity
- Model performance
 - Out-of-sample forecast testing provides objective performance ranking of alternative models
 - Analysis of residuals characterizes sources of poor model performance

